

PROTOCOL 10: Fully Edentulous Dual Scan Protocol: Mandible Denture CBCT Scan of Mandible

1st CBCT: Scan Mandible denture with x-ray markers only



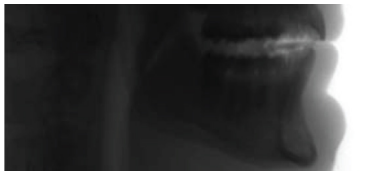
Mandible Denture with x-ray markers:

- Position appliance on foam block
- Orientate teeth occlusal facing up
- Place 6-8 markers randomly

CBCT Scan Settings:

- Mand 6 cm
- 0.4 Voxel
- 20 second scan

2nd CBCT: Scan Mandible WEARING mandible denture with x-ray markers

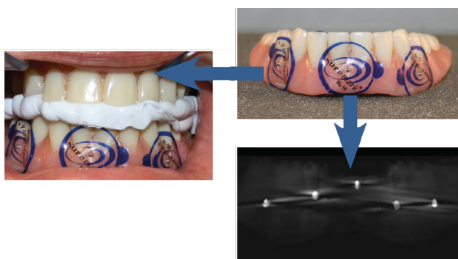


Vital Anatomy to be captured:

- Superior: Capture 1- 3mm of maxilla dentition
- Inferior: Capture full mandible with slight clearance below chin

- **CBCT General Settings:** Mandible 6cm, 20 Sec. scan duration, 0.4 Voxels

- **Patient Positioning:**



1

When scanning a patient wearing denture with x-ray markers ensure that:

- Confirm fit by asking patient, “Is the denture fitting correctly?”
- Use a bite registration for separation, secure fit and eliminate rocking
- Be sure that no “black air” is between denture and anatomy on CBCT.
- Ensure denture is well fitting

2

Pre-Scan Patient Instructions:

1. Breathe through your nose
2. Close your bite, but don't clench teeth
3. Close your eyes
4. Place tongue at the roof of your mouth